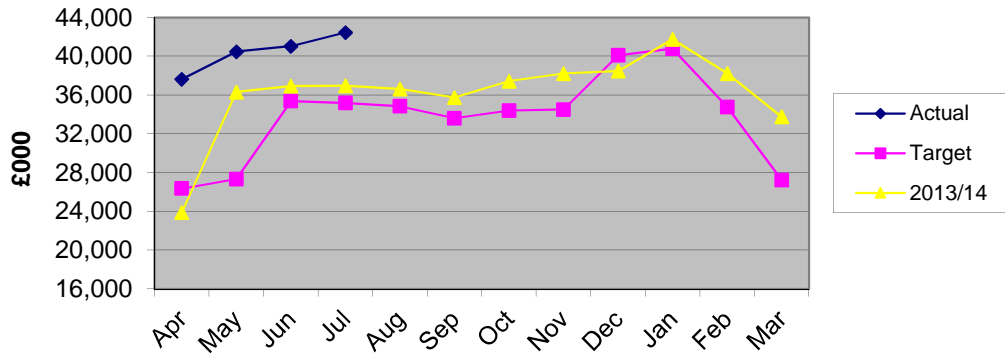


**Finance & Resources Advisory Committee Finance Indicators 2014/15  
as at end July 2014**

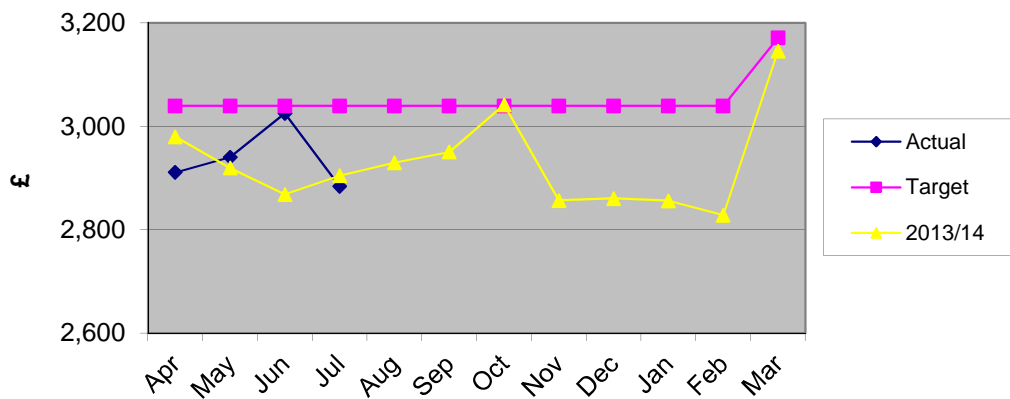
Description	target	actual	Variance		notes	graph
Monthly investment balance £000	26,358	42,453	16,095	61.1%	Total investments at month end. From April 2013, precepts are paid in 12 instalments of roughly £5m. (Previous years we paid in 10 instalments - not June or December). The target figures have been updated to reflect the Balance Sheet position as at 31/03/13.	1
Average monthly cost per employee (non cumulative) £	3,039	2,810	-229	-7.5%	Target is annual pay budget divided by budget ftes, figures include agency and casual staff. Actuals excludes costs and fte of Agency staff at Dunbrik.	2
Average monthly salary cost SDC £000	1,107	1,056	-51	-4.6%	Excludes numbers and costs of Dunbrik temps	
Number of ftes	371.8	377.5	5.7	1.5%	Target is budgeted ftes.	3
Council Tax % collected for 2014/15	39.3	40.0	0.7	1.8%	LPIFS 19. Monthly cumulative figures	-
NNDR % collected for 2014/15	41.0	40.2	-0.8	-2.0%	LPIFS 20. Monthly cumulative figures.	-
Council Tax payers % on direct debit	72.0	78.9	6.9	9.6%	LPIFS8 - % on direct debit	4
Investment return %	0.80	0.58	-0.22	-27.8%	Cumulative return on investments. Target is budget assumption	5
3 month LIBID		0.40	0.40			
7 day LIBID		0.34	0.34			
Sundry debtors: debts over 21 days £000	35	21	-14	-39.7%	21 days is taken as the base as the first reminder is issued after 3 wks.	6
Sundry debtors: debts over 61 days £000	20	17	-3	-16.9%	61 days is when the third reminder is issued (debts exclude items on 'indefinite hold', e.g. debtors in administration)	7

**Finance & Resources Advisory Committee Finance Indicators 2014/15  
as at end July 2014**

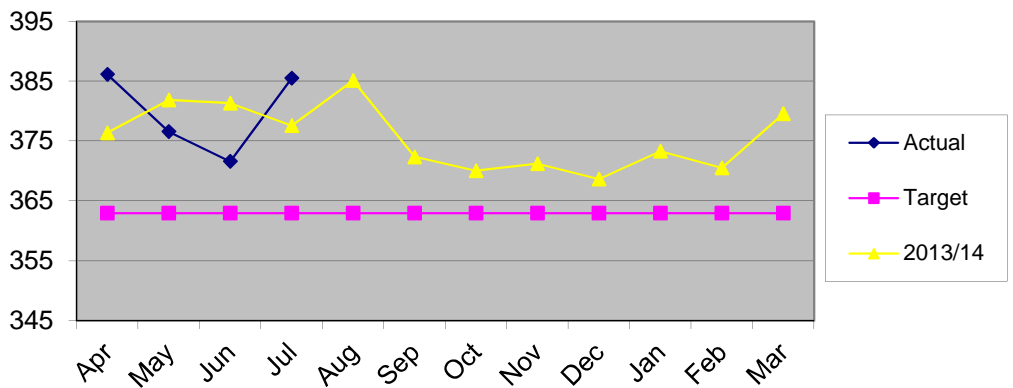
**Graph 1 - Monthly Investment Balance**



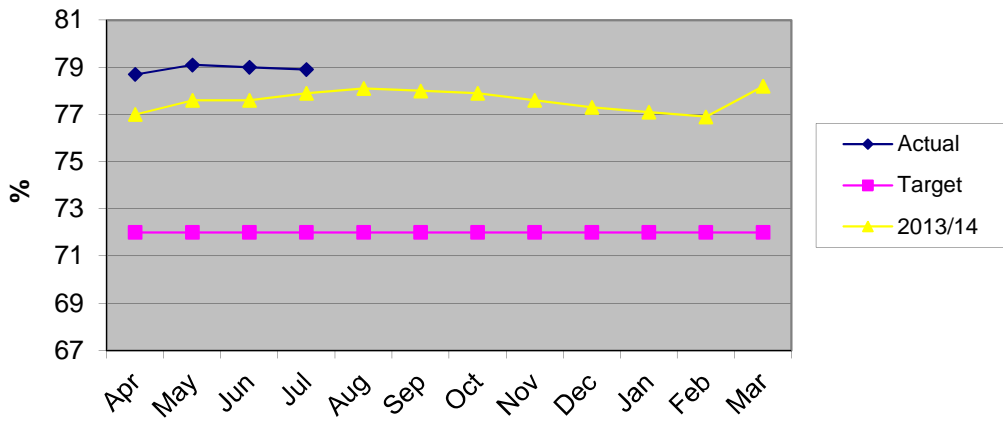
**Graph 2 - Av. monthly cost per employee (excludes agency staff at Dunbrik )**



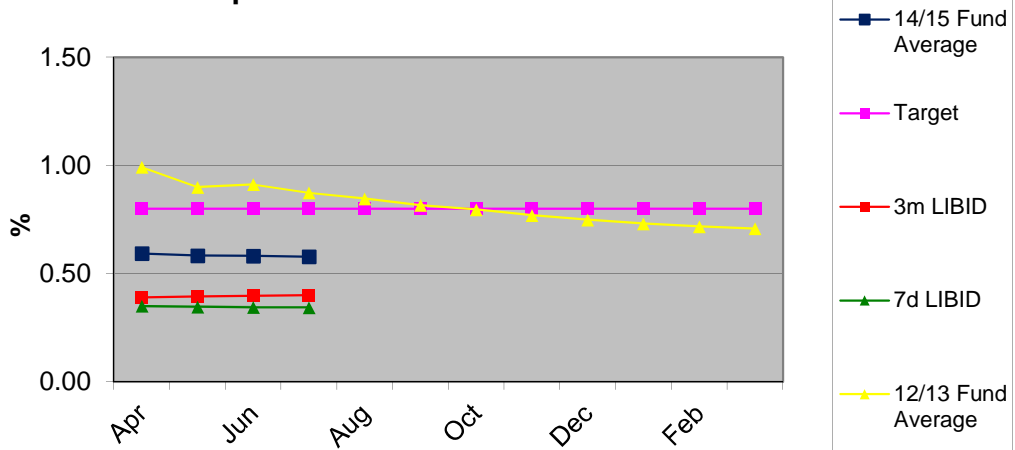
**Graph 3 - Number of ftes  
(includes agency staff used on Trading account)**



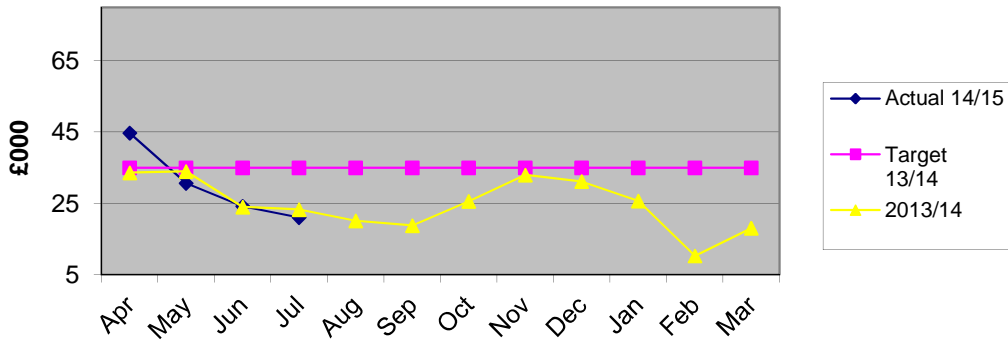
**Graph 4 - Council Tax % on direct debit**



**Graph 5 - Investment Return %**



**Graph 6 - Sundry debts over 21 days**



**Graph 7 - Sundry debts over 61 days**

